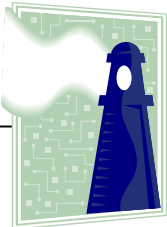


Community Access Quarterly



Community Access Television

Coming soon!

Field Camera Workshop
Sept 21, 6:00-9:00 p.m.

Field Lighting Workshop
Sept 28, 6:00-9:00 p.m.

Level II Class
Aug 31, Sept 7, 14
Sign up now!
Class fee \$10.00
In advance

Next Orientation
Thursday, August 5
Or Thursday, Sept 30
6:00 p.m.

Being a paid member and attendance at an orientation session are the prerequisites for signing up for Level I.

Level I classes are held Thursday, either morning or evening, for six weeks. Signups take place at orientation sessions, which are held every eight weeks. Next available: Aug 12-Sept 16. Only a few spots left!

Random Access Notes from Executive Director Jeanne Bleil

On a recent sunny June morning, I returned from an early meeting to find a full parking lot at 142 West 12th Street. A stroll through the building did my heart good. Members were working hard at all three of our editing stations and in the studio. Back in our “cafeteria,” one member was editing her program at the Applied Magic station. Another was pumping out the four July programs for the series that his group produces in Edit A, and yet another was working on a long-term project in Edit B. The GoVideo deck was busy dubbing a program, and in the studio members

were translating a previously produced program into the Bosnian language. Plus, the portable Applied Magic editor and all of the field cameras were checked out—and this was the middle of the week, not even a weekend!

This is what your support enables. You empower these community members to produce programming that is entertaining, inspiring, informational, diverse, and, most importantly, *local*. Thank you, from all of us at Community Access Television.



Members of the Erie Area Square and Round Dancers Association strike a pose after their stellar performance on “Amazing Grays” on June 23, for The Card Table Connection.

Talk is Cheap. Free Speech Isn't.

We invite you to join us for a moment in contemplating this pithy little phrase that will soon appear on the back of our new 100% cotton, forest green tee shirts. We don't necessarily refer to dollars and cents when talking about the cost of free speech, although of course public access television is not without its price tag.

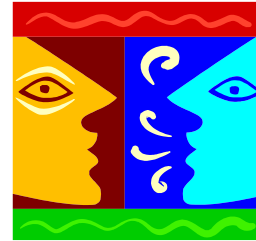
Freedom of speech is among our rights under the First Amendment to the U.S. Constitution, which states: **Congress shall make no law respecting an establishment of religion, or prohibiting the free exercise thereof; or**

abridging the freedom of speech, or of the press; or the right of the people peaceably to assemble, and to petition the Government for a redress of grievances.

One of the reasons we chose the "talk is cheap" phrase for our new shirts is to remind us of the struggles that our country's founders, our military, and ordinary citizens have undertaken to insure that our rights are protected. So talk all you want; just remember that although talk may be cheap, free speech isn't.

Join us in wearing the new Community Access Televi-

sion tee shirt at our summer festival shoots by using the order form on the next page. See you behind the lens (or at the microphone, exercising that right).



*Erie Art Museum Blues & Jazz Festival
Frontier Park*

It's the Best Time of Year!

Calling all members!

Sign up today to participate in our shoot at the Erie Art Museum Blues & Jazz Festival at Frontier Park on Saturday, August 7, or Sunday, August 8. We need your help! This is our seventh year of shooting this wonderful festival and we guarantee that you will have a great time.

If you can't help then, how about CelebrateErie? Coming

up on August 20-22, there is plenty of scope for your creative energies. We'll be there, so call us at 454-2226 to schedule your time slot.

No need to worry that you haven't finished your training or don't have any experience. We will be there to help you and you will learn more than you can imagine!

A Delightful Dilemma Making Room for Series Programs

We have been thrilled at the number of new programs being produced at Community Access Television this year, but it does create some interesting scheduling dilemmas. If you are a series producer, please note that our Board of Trustees recently approved a change to our Rules of Operation that states that, if a series producer does not submit a new program for two consecutive intervals (weekly, bi-weekly, or monthly, depending on

the series), the series time slot may (emphasis on "may") be reassigned to another producer. Please know that we will certainly work with you to avoid changing your time slot and will give you the opportunity to get new programming in within a reasonable time before making any changes. But we want to be fair to all, so please make every effort to get your programs in on time.

Facility Scheduling

We've made a change in our strict policy of requiring seven days' notice for any use of our facility. During normal weekday hours, which are 8:30-4:30, if nobody else is scheduled for the studio or editing booths, you can have instant access. Just check with any staff member for availability. Please see the box on the back page for other facility request deadlines.

Exciting new
CAT logo wear! See
below.

Order Form

Name _____

Daytime Telephone _____ Evening Telephone _____

Email address _____

Item	Quantity	Size(s)	Price	Total
Short-sleeve tee shirt Sizes S-XXL			\$10.00 + \$1.50 for XXL	
Long-sleeve tee shirt Sizes S-XXL			\$15.00 + \$1.50 for XXL	
Ball Cap		One size fits all	\$10.00	
Visor		One size fits all	\$10.00	
Polo shirt clearance		Call for availability	Clearance Price! \$20.00/\$23.00	
Total				

Make checks payable to Community Access Television and mail with form to:

Community Access Television
142 West 12 Street
Erie, PA 16501

If we do not have your item in stock, please allow 3 weeks for delivery. You will be notified when your order is available.

Office use
Amount received _____ Check # _____ Staff _____
Date notified _____

City of Erie Cable TV Access Corporation
Community Access Television
142 West 12 Street
Erie, PA 16501

NON-PROFIT ORG
US POSTAGE PAID
ERIE PA
PERMIT NO: 60

Holiday Closings

Labor Day

Monday, September 6

Hours of Operation

Monday through Friday
8:30 a.m. to 4:30 p.m.

Evenings Mon—Wed
Saturday mornings

By appointment

Subject to staff availability

Facility appointment deadlines

Weekdays—seven days preferred, but on demand if no one is scheduled.

Mon-Wed evenings—seven days

Other—fourteen day minimum

HOW TO REACH US

Community Access Television
142 West 12 Street
Erie, PA 16501
(814) 454-2226; Fax (814) 455-4109
Email: info@cattv-erie.org
www.cattv-erie.org

Tidying Up the Place

The tapes are piling up all over the place, and it's time to weed them out. Producers are responsible for picking up their video-tapes within thirty days after they have finished airing or after they have been notified. Please pick up your tapes promptly. Tapes that are currently waiting to be picked up will be recycled as of September 1st. Please call if you are not sure whether you are among those with waiting tapes.

Our storage area also needs to be cleaned out. Members who are regularly producing are authorized to leave their furniture and props here, but the key phrase is "regularly producing." You will be notified if there is something that must be picked up, with a deadline for compliance.

Copyright and Motion Picture/Television Productions

We are searching for our copy of the spiral-bound book, Copyright and Motion Picture/Television Productions. If you borrowed and neglected to return it, please bring it back as soon as possible so that other members can have access to it.

In the meantime, a good resource for anyone interested in finding out more about copyright issues is the United States Copyright Office of the Library of Congress. The web address is www.copyright.gov.

Please Send Us Your Email Address

As we continue to seek efficient ways of communicating, we are slowly building our database of member email addresses. Please send yours (unless you already know that we have it) to Sherry Gardner at sgardner@cattv-erie.org.